

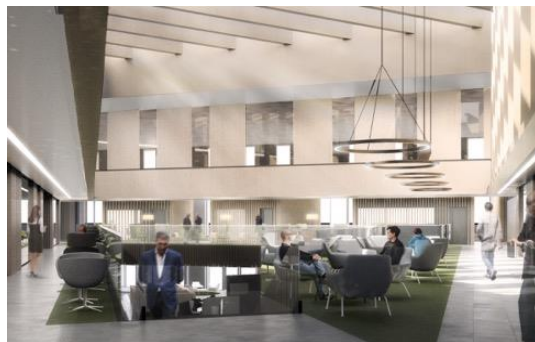
NEW INNOVATION AND ENTERPRISE CENTRE – Brief 003

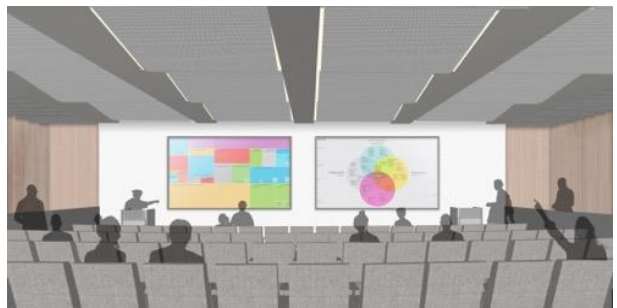
We are on target for a Summer 2018 opening of our new Innovation and Enterprise Centre. This remains the working title while we develop a compelling name and identity. Our aim is to create a vibrant community that fosters collaboration and partnership and inspires innovation and enterprise, so at the heart of the new building is extensive space in which to meet, network, share information and ideas and uncover opportunities. Tenants will have access to resident professional support to facilitate access University research and innovation capabilities, graduate and student talent and professional development, alongside other users of the facility including investors and funders, IP lawyers, tax accountants, and business support agencies and networks.



An interactive AV display area in the atrium will showcase University research, tenant and wider community successes and news, and support an extensive programme of events in the lecture theatre and seminar space.

The café, business lounge and a mix of other open and semi-private space will provide a focal point for collaboration





Extensive meeting facilities ranging in size from 4-25 person, a high quality 120-seat lecture theatre and flexible seminar space accommodating 35-140, all with AV.



A wide selection of high quality office space and Cat 2 laboratories.



Facilities in the vicinity include the Edge Gym, the new multi-storey car park and pleasant landscaped areas.



**Any Questions?
Please do not hesitate to contact us.**

**Tracy Robinson
Managing Director
tracy@leedsinnovationcentre.co.uk
3845845**

Images of the facility are at concept design stage and subject to change.